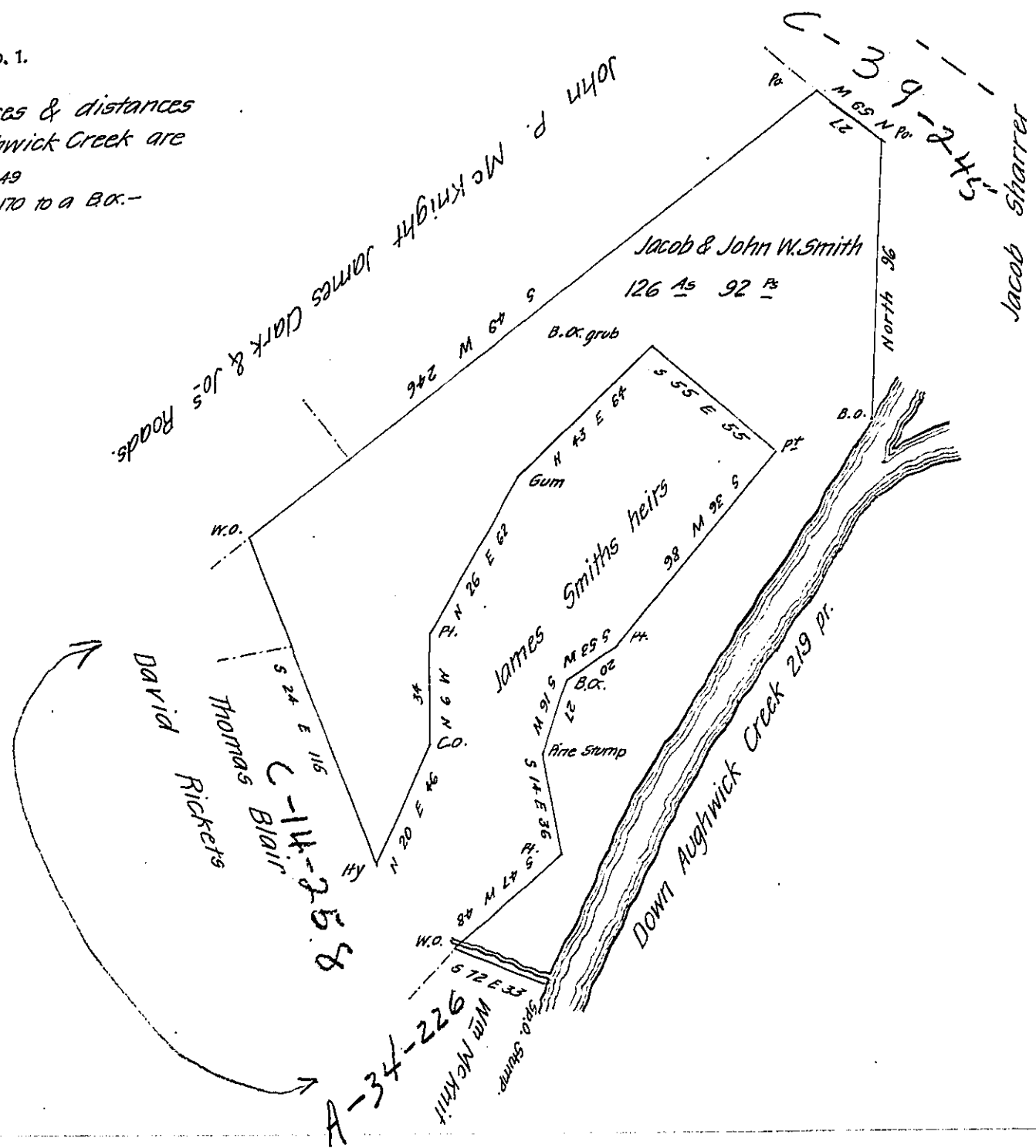


FORM NO. 1.

The Courses & distances
Down Aughwick Creek are

N 19 E 49
N 31 E 170 to a B.O.-



Situate in Shirley Township Huntingdon County Containing one hundred & twenty six acres & ninety two perches and allowance of six per Cent Surveyed the 6th & 7th days of July 1840 in pursuance of a Warrant granted to Jacob & John W. Smith dated 6th March day of Feby 1840 Pt.

Wm Reed D.S.

IN TESTIMONY that the above is a copy of the original remaining on file in the Department of Internal Affairs of Pennsylvania, made conformably to an Act of Assembly approved the 16th day of February 1833, I have hereunto set my hand and caused the Seal of said Department to be affixed at Harrisburg, this seventh day of February 1908

Henry Aouch
Secretary of Internal Affairs.